



www.GTsimulators.com
Brochure 2011

Anatomical Models

Medical Simulators

Biological Models

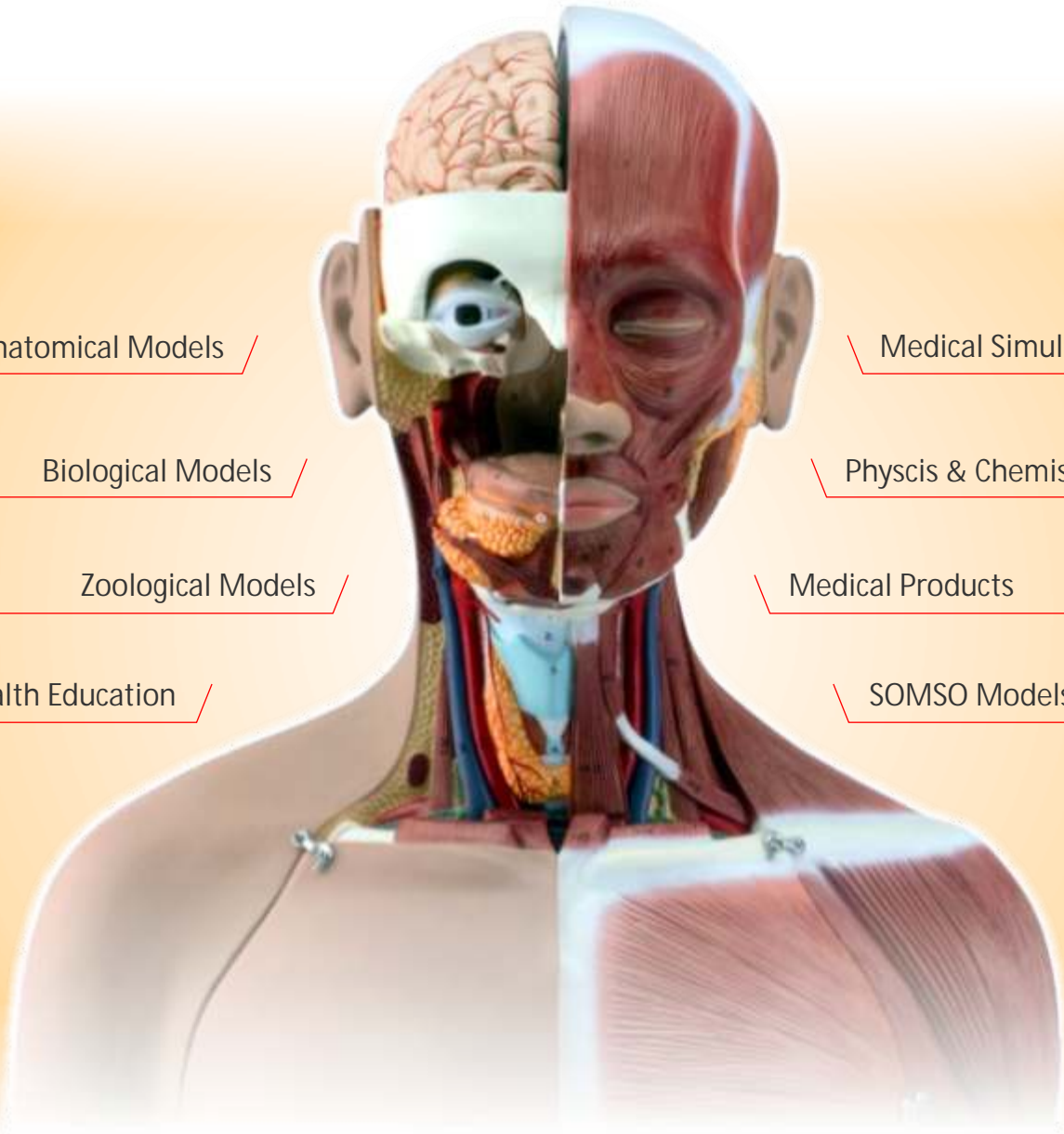
Phycis & Chemistry

Zoological Models

Medical Products

Health Education

SOMSO Models



Authorized Dealer

4634 N Hiatus Road - Sunrise, FL 33351

Office: (954) 746-4270

Fax: (954) 746-4280

Toll-Free: (888) 437-3900

E-mail: sales@gtsimulators.com - Website: www.gtsimulators.com

Anatomical Models

Check our complete line of Anatomical Models. [Click Here!](#)

Stan the Human Skeleton Model



This classic human skeleton model (we call him Stan) has been the standard anatomical skeleton model of quality in hospitals, schools, universities, and laboratories for over 50 years. Don't settle for imitation anatomical skeleton models which compromise quality in workmanship and materials. Don't compromise in your demands for a medically accurate and safe human skeleton model, ask for Stan, he's your man!

Link: www.GTsimulators.com/product-p/a10.htm

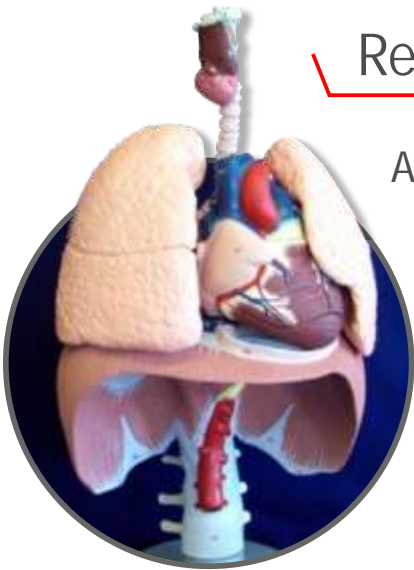
BONElike Human Skull, Half Transparent, Half Bony

This worldwide unique and high quality didactic skull will leave no questions in the study of skull anatomy unanswered! The possibility to transfer the structures visible on the transparent half to the bony half give this skull a special didactic value. On the right, transparent skull half the paranasal sinuses can be easily located even from the outside, since these are marked in different colors: maxillary sinus (yellow), ethmoidal cells (orange), frontal sinus (green), sphenoidal sinus (purple).

Link: www.GTsimulators.com/product-p/A283.htm



Respiratory Organs Model



A life size Respiratory Organs Model in unbreakable material, finely coloured to show all major anatomical details. The diaphragm shows: muscles, tendons, openings for the major vessels and esophagus. The aorta shows the origins of five abdominal arteries. Three thoracic and three lumbar vertebrae are shown.

The left lung expose:

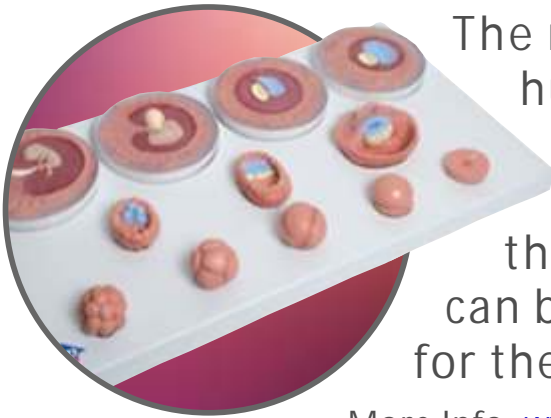
- The bronchioles;
- Pulmonary arteries and veins;
- The larynx shows detailed structure.

The right lung expose:

- The atria and ventricles
- The superior and inferior vena cava aorta
- Pulmonary artery
- The coronary sinus

Link: www.GTsimulators.com/product-p/ESPZKJ649.htm

Embryonic Development in 12 stages



The model represents the development of the human germ cells from fertilisation until the end of the 2nd month of pregnancy in 12 stages. Each stage can be removed from the common stand as an individual part and can be purposefully used for teaching and tests for the embryological specialist field.

More Info: www.GTsimulators.com/product-p/VG391.htm

3B Scientific Glass Cell Model, 40,000 times full-size

The 3B Scientific Glass Cell Model shows the essential function-bearing cell organelles. Their arrangement in the model provides a momentary snapshot of the dynamic balance of a cell. The cell nucleus, a few mitochondria and the lysosomes are shown in section, so that their internal structure is visible.

The glass cell is an eye-catcher in many exhibitions and has received several distinctions as "World Didactic Gold Award 1990".



Link: www.GTsimulators.com/product-p/VL650.htm

Master Set of Zoology Models, set of 7



Master Set Includes:

- Frog Model Activity Set
- Crayfish Model Activity Set
- Grasshopper Model Activity Set
- Perch Model Activity Set
- Clam Model Activity Set
- Earthworm Model Activity Set
- Fetal Pig Model Activity Set

Link: www.GTsimulators.com/product-p/H2758.htm

Check our complete line of Health Education. [Click Here!](#)

Model of Female Breast and Chest Wall



The model consists of a milk-giving female right breast with the surrounding chest wall area and a non-milk-giving female left breast with the surrounding chest wall area. Both parts of the model have a sagittal cut. The cut surfaces show the tissue of the breast gland as well as the deeper-lying anatomical structures such as the muscles, ribs, costal pleura, pulmonary pleura and lungs.

More Info: www.GTsimulators.com/product-p/L56.htm

Complete Otto Ostomy™ Package

Modeled from an actual patient's CT scan, Otto Ostomy™ will help your patients and their families become more knowledgeable about what to expect, while demonstrating how ileostomies, urostomies and colostomies function. Otto Ostomy™ has a clear torso shell with four openings for the insertion of stomas. The torso shell is easily removed for teaching or to facilitate in accessing and manipulating the intestines.

More Info: www.GTsimulators.com/product-p/VT0310.htm



Human Skin Series Plus Burn Pathologies, magnified 75 times



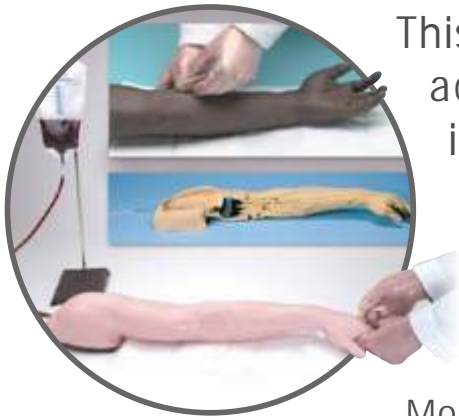
Three-dimensional and magnified 75 times, this series is really six models in one. The front face of the model compares and contrasts normal healthy skin from three different body regions: the palm or sole (totally hairless) the axilla or armpit (sparsely endowed with hair) the scalp (completely hirsute)

Link: www.GTsimulators.com/product-p/DGA942.htm

Medical Simulators

Check our complete line of Medical Simulators. [Click Here!](#)

Life/form® ADVANCED Venipuncture and Injection Training Arm



This revolutionary training arm provides complete venous access for IV therapy and phlebotomy, plus sites for intramuscular and intradermal injections. An extensive 8-line vascular system allows students to practice venipuncture at all primary and secondary locations, including starting IVs and introducing Over the Needle IV Catheters.

More Info: www.GTsimulators.com/product-p/LF01121U.htm

Simulaids PDA STAT Manikin

PDA STAT Manikin challenges your concept of scenario training. By simply stepping back away from the manikin and selecting a menu driven scenario from the included PalmPilot, you can watch the events unfold, question the students about their actions, and teach critical thinking skills! Whether you choose a clinical lab setting for basic instruction, an office floor down the hall to demonstrate scene anomalies, or a car in the ditch to test multi-tasking prioritizing, PDA STAT Simulator defines portable.

More Info: www.GTsimulators.com/product-p/400.htm



Total Childbirth Education Station



Maximize your childbirth training capabilities with this complete simulation package and **save over \$200.00!**

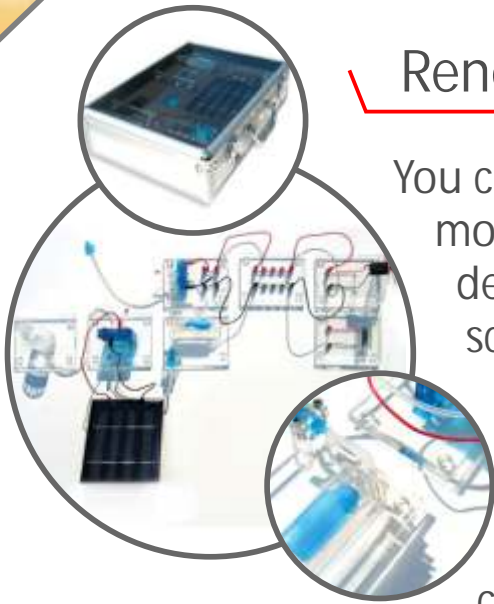
The Total Childbirth Education Station Includes the Advanced Childbirth Simulator (\$500) , the Birthing Mechanism System Module (\$500.10), the Palpation Module for Leopold's Maneuvers (\$500.3) and the Labor Delivery Module (\$500.4).

Link: www.GTsimulators.com/product-p/SB38758U.htm

Physics & Chemistry

Check our complete line of Physics & Chemistry. [Click Here!](#)

Renewable Energy Education Set



You can even refuel your miniature fuel cell car using the modular set. This modular experiment set is designed to demonstrate clean energy technologies on a miniature scale. Using various component configurations included in this set, see how renewable energy can be harnessed, stored and re-used in a number of applications and understand how hydrogen is a unique link between natural sources of power and power consuming devices using the electrolyzer and fuel cell products. Link: www.GTsimulators.com/product-p/U40624.htm

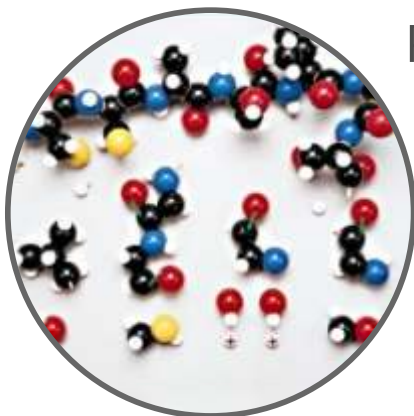
Protein-Amino Acid Set

Wave trough for demonstrating or investigating the basic properties of waves using waves in water. A plexiglas duct is filled with water and a sinusoidal wave is generated that propagates with no reflection at the end thanks to an absorber mechanism. The frequency and thus the wavelength of the resulting movement can be varied continuously. In order to investigate reflection, the absorber at the end can be removed.

More Info: www.GTsimulators.com/product-p/U8431411.htm



Protein-Amino Acid Set



Protein-Amino Acid Set

Flex-O-Models, for hands-on biochemistry study

Link: www.GTsimulators.com/product-p/H2758.htm

Therapy & Medical Products

Check our complete line of Therapy & Medical Products. [Click Here!](#)

HealthSmart Digital Finger Pulse Oximeter, Standard



Features and Benefits:

Small and lightweight, digital LED display, 2 display modes, display SpO2, PR, pulse bar, low power consumption, auto power off, battery low indicator, accommodates finger sizes from pediatric to adult. 2 Years Warranty!

Link: www.GTsimulators.com/product-p/40-800-000.htm

TENS 7000 Dual Channel 5 Modes

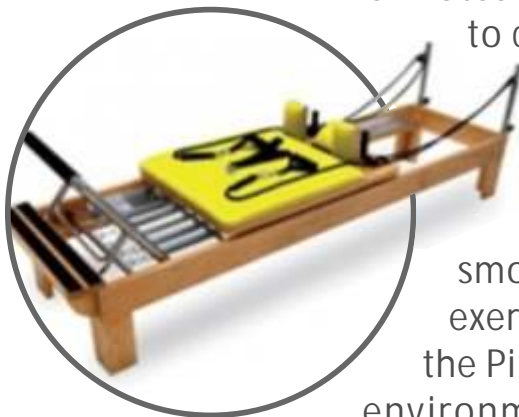
The TENS 7000 2nd edition is the unit to win your customer's business. Our Nicest and most Powerful (100mA) TENS unit. The features include: Dual Channel, 5 modes, Timer, Patient Compliance Meter, New Stronger 100mA output, safety amplitude cover, sturdy metal belt clip, rubber side railings for maximum handling and a premium silver finish. System Includes: Stimulator, Lead Wires, 1 package of high quality Self-Adhesive Electrodes, 9V Battery, Hard Plastic Carrying Case, Instruction Booklet .



3 Year Manufacturer Warranty!

Link: www.GTsimulators.com/product-p/W53101.htm

Total Childbirth Education Station



The Pilates Reformer features a robust stationary design allowing you to confidently move from one controlled exercise to another.

Use the Pilates Reformer to perform countless exercises to tone and shape the entire body and increase cardiovascular results. Made from attractive yet durable eucalyptus wood and built to last. Moveable parts slide smoothly making the device most favorable for cardiovascular exercises. The beautiful yet ecological eucalyptus wood used in the Pilates Reformer is harvested from forests that meet stringent environmental, social and economic standards.

Link: www.GTsimulators.com/product-p/W15128.htm

Check our complete line of SOMSO Models. [Click Here!](#)

Brain With Cytoarchitectural Areas, 15-Part



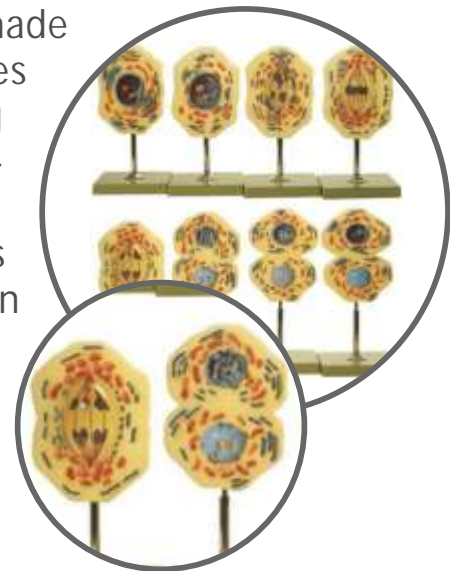
Natural size Anatomical Model of Brain made in SOMSO-Plast. Developed by Prof. Dr. J. W. Rohen, Department of Anatomy of the University Erlangen, the Anatomical Model of Brain With Cytoarchitectural Areas is an ideal aid for all biologists, neurologists and doctors who lecture to students of medicine, biology and paramedical professions on neuro anatomy.

Link: www.GTsimulators.com/product-p/BS25-1.htm

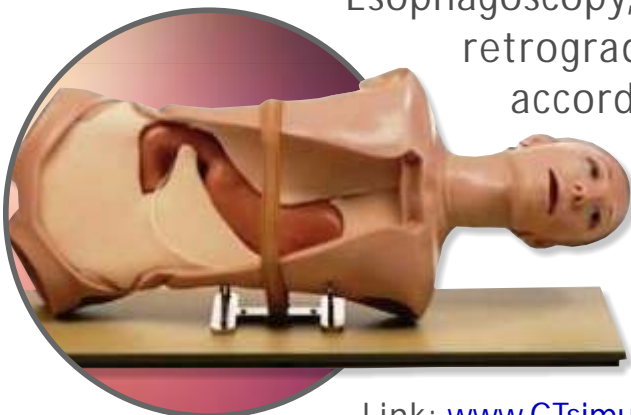
Mitosis Models

After Studiendirektor Christian Groß. Enlarged many times, made in SOMSO-Plast®. On 8 separate models the following phases are represented: 1. late interphase, 2. prophase, 3. beginning metaphase, 4. metaphase - equatorial plane, 5. anaphase - migration of daughter chromosomes, 6. late anaphase, 7. telophase and 8. daughter cells in the early interphase. As shown in the models 3 - 5 the spindles and chromosomes can be revolved for demonstration purposes under a transparent cover. Model in one piece. The models are mounted individually on a stand with green base.

Link: www.GTsimulators.com/product-p/ZOS 57-1.htm



CLA OGI Medical Training Manikin



Esophagoscopy, gastroscopy, bulboscopy as well as endoscopic-retrograde cholangiography-pancreaticography (ERCP) according to Prof. Dr. M. Classen, and H. Ruppin M.D. For training of endoscopy of the upper gastrointestinal tract, for catheterisation of the papilla Vateri by retrograde instillation of contrast medium into the pancreatic duct system (Natural size, made of special plastic).

Link: www.GTsimulators.com/product-p/CLA-4.htm