

VATA

Realism in Clinical Simulation

Freddie Fistula™ **Skills Trainer – 0230** **USER MANUAL**



308 South Sequoia Parkway, Canby, Oregon 97013 USA
ph. 503.651.5050 | fax 503.651.5052 | email info@vatainc.com | www.vatainc.com

Thank you for your purchase of **VATA's Freddie Fistula™ Skills Trainer – 0230**.

Freddie Fistula™ Skills Trainer – 0230 was developed to provide clinicians with a realistic aid to facilitate instruction, practice, and management of open abdominal wounds with active fistulas.

The **Freddie Fistula™ Skills Trainer** incorporates a realistic feeling soft abdomen with an open abdominal wound showing exposed intestines with “gutters” on all sides, a stoma and also a drainage tube. Three separate fistulas are present in the abdominal wound area:

- Stomatized Fistula – Easy to observe effluent flow
- Non-Stomatized Fistula – Difficult to observe when effluent is not flowing
- Hidden Fistula – Location is not observed

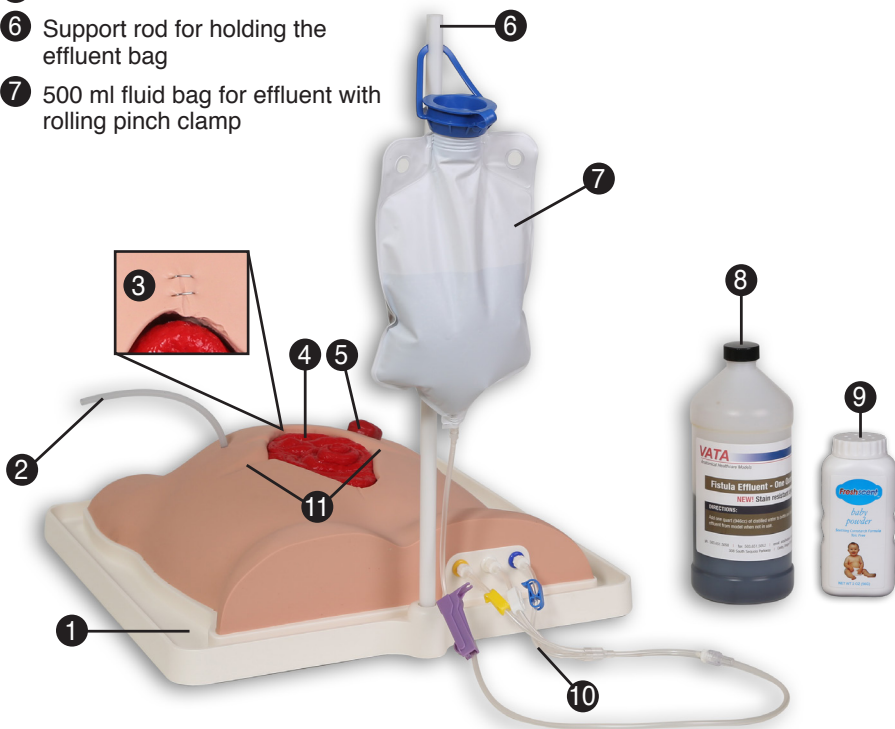
Any combination of the three fistulas can permit effluent flow via color-coded pinch clamps, allowing for a challenging scenario when applying a dressing.

The **Freddie Fistula™ Skills Trainer** includes an integrated base with a recessed catch tray that can accommodate up to 700ml of effluent and a support rod to hold the fluid bag. When not in use, the rod can be easily stored within the base. The unique design of the **Freddie Fistula™** utilizes proprietary skin that permits standard dressings to be easily applied and removed. The **Freddie Fistula™ Skills Trainer** helps to build competency and confidence in this challenging wound care scenario by allowing the user to employ some of the latest wound treatments and techniques.



Product Components

- 1 Effluent catch tray with skin
- 2 Drain tube
- 3 Surgical staples
- 4 Fistulas (three orifices for effluent to flow)
- 5 Stoma
- 6 Support rod for holding the effluent bag
- 7 500 ml fluid bag for effluent with rolling pinch clamp
- 8 1 quart bottle of effluent concentrate (just add distilled water)
- 9 Baby powder
- 10 3-way tube set with color-coded blue, white, & yellow pinch clamps
- 11 Skin fold creases



Includes Carrying Case

Soft-sided fabric case with zipper closure, supply pouch, shoulder strap and handle.

Set-Up Instructions



1. Remove support rod from the underside of the **Freddie Fistula™ Skills Trainer** base.

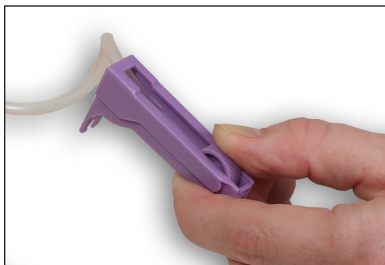


2. Insert the support rod into position on the base to hold the effluent bag.



3. Fill the 1-quart effluent concentrate bottle with distilled water and shake well to mix solution.

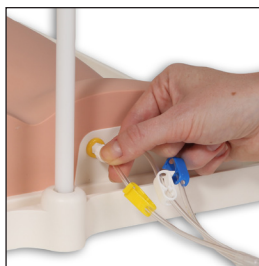
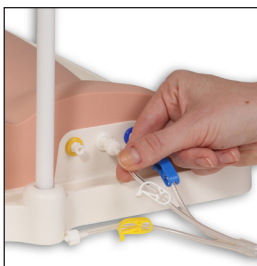
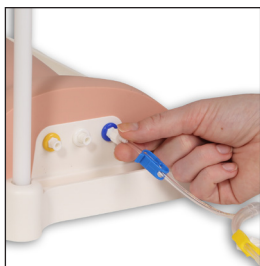
Set-Up Instructions



4. Close the rolling pinch clamp on the effluent bag fluid line before filling the bag with the effluent from the bottle.

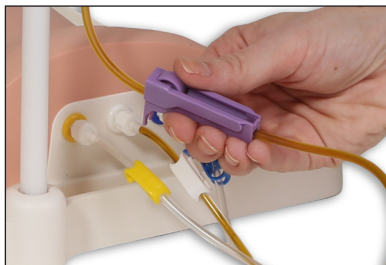


5. Fill the effluent bag with from the bottle. Close the lid and secure to prevent leaking. Attach the bag to the top of the support rod by sliding the bag holder into the slot.

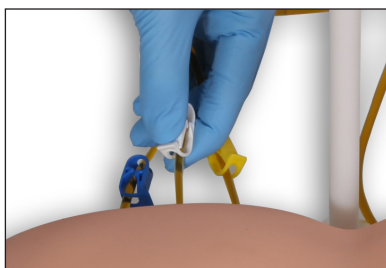


6. Attach the 3-way tubing lines to the corresponding colored-coded luer fitting on the manifold located on the trainer base (as shown). Connect blue to blue. Connect white to white. Connect yellow to yellow.

Set-Up Instructions

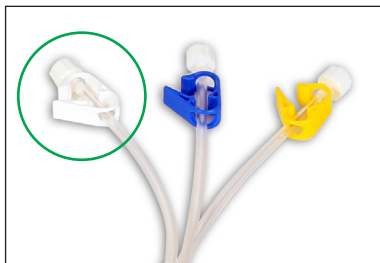
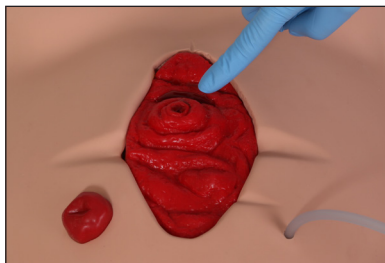


7. Each color-coded pinch clamp and tubing line corresponds with a specific fistula on the skills trainer. To allow for effluent fluid to flow, open the rolling pinch clamp just below the fluid bag.

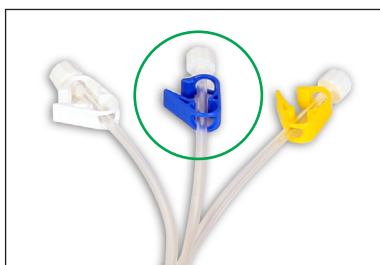
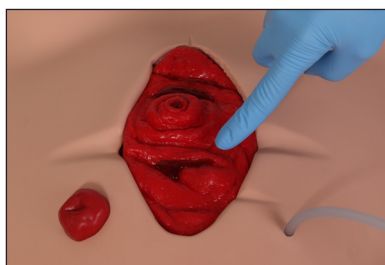


8. To initiate flow to any or all of the three fistulas, open the corresponding color-coded pinch clamps.

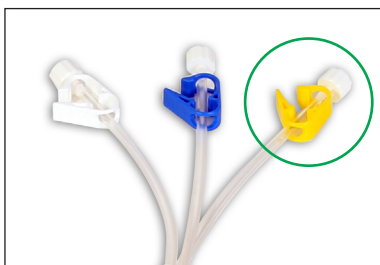
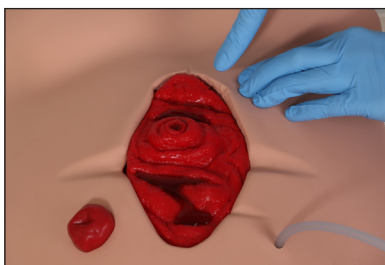
Set-Up Instructions



9. The white pinch clamp opens or closes to allow effluent flow out of the visible stomatized fistula.



10. The blue pinch clamp opens or closes the allow effluent flow out of the non-stomatized fistula in the fold of the intestines.

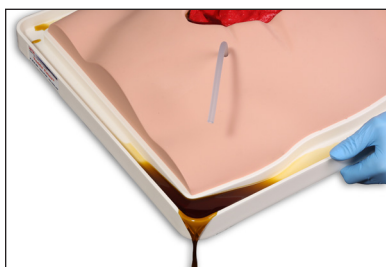


11. The yellow pinch clamp opens or closes to allow effluent to flow out of the hidden fistula under the skin edge.

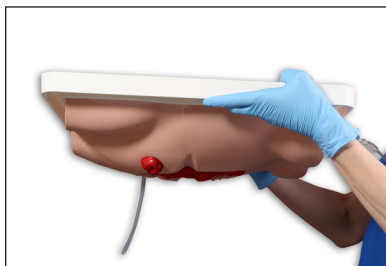
Care & Storage Instructions



1. Stop the flow of effluent by closing the roller clamp on the tubing line connected to the effluent bag.
2. Remove the effluent bag from the support rod holder.
3. Remove the support rod from the trainer base and attach it to the base for storage.
4. Close each of the color-coded pinch clamps to prevent leakage of effluent fluid before disconnecting the 3-way tubing set from the luer fittings on the manifold.

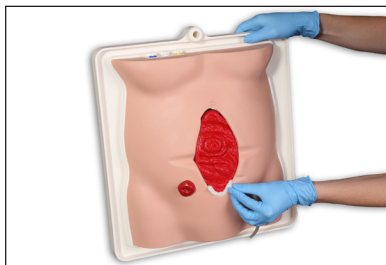


5. Take the trainer to the sink and empty all effluent from the tray and gutters back into the effluent concentrate bottle or discard.
6. If emptying all of the effluent at the sink is not possible, the surfaces of the trainer can be cleaned with wet towels.



7. The effluent is stain-resistant if washed off within an hour of use. Leaving effluent in the tray for longer than an hour may result in surface staining. Rinse the tray with water and drain all of the remain fluid by inverting the trainer.

Care & Storage Instructions



8. Gauze can also be used to absorb effluent in the gutters around the fistula wound.
9. Clean the effluent bag by flushing it out with water.



10. Clean the tubing lines by connecting up to a syringe with water and flushing out the remaining effluent.
11. Thoroughly wash the skin on the surface of the trainer as well as the gutters with mild soap and warm water to remove any residual effluent.



12. Pat the surface of the trainer to dry. Once dry, lightly sprinkle baby powder and wipe away the excess with a non-lint cloth.
13. Do not leave dressings on the skin surface overnight.

Helpful Hints

- Do not use food coloring or other dyes to simulate effluent as these may permanently stain the trainer and will void the product warranty.
- After each use, it's best to disconnect the tubing lines from the model and flush out all lines with water.
- To remove any residual adhesive left on the trainer from dressings, use any patient approved adhesive remover, followed by a cleaning with 70% isopropyl alcohol. When dry, gently sprinkle with the supplied baby talc and wipe off excess with a non-linting cloth.
- When not in use, it's best to store the trainer in the carrying case.
- Do not clean model with solvents or corrosive solutions. Wash model only with a mild liquid soap and warm water.

Parts List

The following items are available for purchase at www.vatainc.com.

<u>Product #</u>	<u>Description</u>
0230	<i>Freddie Fistula™</i> Skills Trainer with Case
0232	Effluent concentrate in 1-quart bottle
0233	Support rod to hold effluent bag
0234	3-way color-coded tubing set
0235	Effluent concentrate in 1-gallon bottle
0611	500 ml fluid bag for effluent

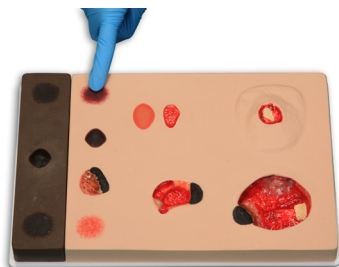
You Might Also Like These Products...



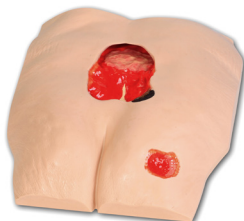
Otto Ostomy™ – 0310



***Seymour II™ Wound Care
Model – 0910***



***Pat Pressure Injury Staging
Model™ – 0980***



***Stan Stage 4 Pressure Injury
Model™ – 0970***



***Vinnie Venous Insufficiency
Leg™ – 0550***



***Annie Arterial Insufficiency
Leg™ – 0555***